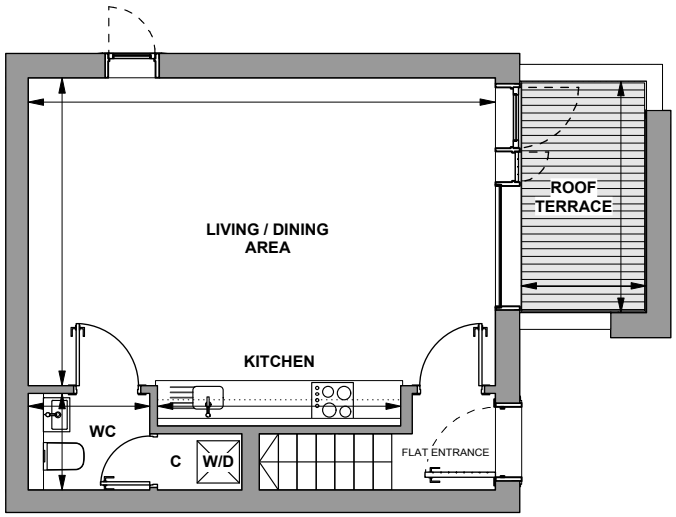


6 FOUNDRY MEWS, 58 BARNES HIGH STREET

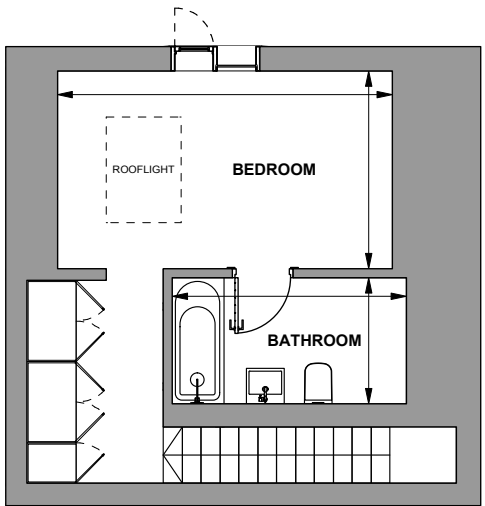
1 BEDROOM DUPLEX

ROOMS	Imperial	Metric	
Living / Dining	20' 3" x 13' 4"	6.18 x 4.07	Room dimensions are based on design drawings Note: angled ceiling in the bedroom and bathroom on the second floor Total Internal Area: 57 sqm / 614 sqft
Kitchen	10' 7"	3.22	
WC	5' 3" x 4' 2"	1.61 x 1.28	
Bedroom	14' 6" x 8' 7"	4.43 x 2.62	
Bathroom	10' 2" x 5' 6"	3.10 x 1.67	
Roof Terrace	5' 5" x 10' 1"	1.66 x 3.07	

FIRST FLOOR
Entrance level



SECOND FLOOR



KEY
C = Cupboard
W/D = Washer/Dryer

LOCATION PLAN

